

ELLIOTTJETS✈



2011 Challenger 300

Serial Number 20298

Highlights

- Pro Line 21 Advanced Upgrade
- Engines and APU on MSP Gold
- ATG-5000 WIFI

Airframe

4,575 Hours Total Time

Engines

4,575/4,575 Hours Total Time – MSP Gold

APU

3,985 Hours Total Time – MSP Gold

Exterior

Over all fuselage is white with Tropical Blue, Bright Blue, and Starlight Silver striping. Stripes were repainted in 2018.

Interior

9 passenger seating. The cabin features forward and aft four-place executive club seats. Forward galley is equipped with a hot liquid container, ice drawer, a microwave oven, and miscellaneous storage compartments. The lavatory is located aft of the main cabin with a belted toilet. Cabin seats, lower sidewalls and carpet replaced in 2018.



Elliott Jets
Website



Avionics

Collins Pro Line 21 Advanced

- Comm: Triple Collins VHF-4000 w/8.33
- Nav: Dual Collins NAV-4000
- Flight Director: Dual Collins FGC-3002
- EFIS: AFD 5220
- ADC: Dual ADC-3000 Air Data Computers
- AHRS: Dual AHC-3000 Computers
- DCU: Dual DCU 5000 Data Concentrator Unit
- Transponder: Dual Collins with ADS-B Out
- DME: Collins DME 4000
- FMS: Dual Collins FMC-5000
- GPS: Dual Collins GPS 4000S
- FFONE: Aircell AXCESS II
- Radar: Collins WXR-854
- Radio Alt: Collins ALT 4000
- EGPWS: Honeywell TAS-5000
- TCAS: TCAS II TTR-4000
- CVR: L3 FA2100
- FDR: L3 FA2100
- Datalink Dual Collins OMC-3100
- IFIS: Dual Collins IFIS 5000

Optional Equipment

Pro Line 21 Advanced Upgrade

ATG-5000 WIFI

Pulse Lights

Jeppesen Charts

Dual FMS V-Speed

XM Weather

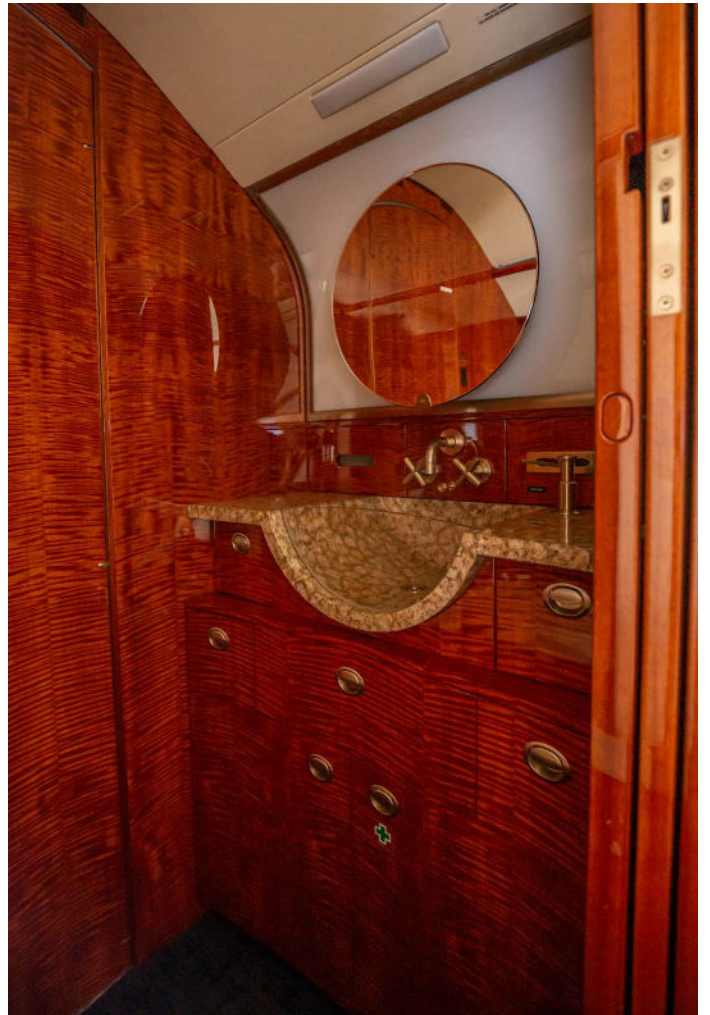
Airshow 4000

Forward and Aft Bulkhead Mounted 20" Monitors

Dual 5010 File Servers















ELLIOTT JETS SALES TEAM



Todd Jackson
VP of Acquisitions



Jim Mitchell
Executive Sales Director



Steve Davis
Executive Sales Director



Eric Hammer
Executive Sales Director



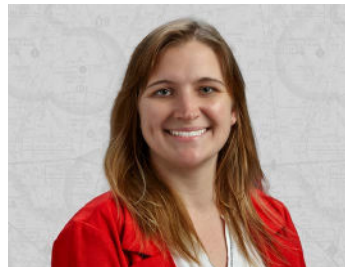
Jim Becker
Accredited Senior
Appraiser



Mike Fischer
Market Analyst



Lynnette Olson
Sales and Marketing
Administrator



Dawn Randall
Marketing Manager



Meghan Welch
Sales Support



Mike Saathoff
Engines & Accessories
Technical Support





ELLIOTT JETS ✈️
www.elliottjets.com
844.937.5387